



Second Circular

The 11th Workshop of the IAG/AIG SEDIBUD (Sediment Budgets in Cold Environments) Working Group

***"Relationships between climate change, vegetation cover and sediment
fluxes in high latitude/high altitude cold environments"***

**Research Station of the Babeş-Bolyai University,
Baru (Hunedoara County, Romania)**

September 5 – 8, 2017

Overview

Changing climate and vegetation cover influence sediment dynamics and budgets in high latitude and high altitude cold environments. Interdisciplinary research involving various scientific fields is needed, to better understand the spatio-temporal patterns of geomorphic process activity operating under climate change and varying vegetation cover conditions in the wide range of cold climate environments worldwide.

The 11th IAG/AIG SEDIBUD (Sediment budgets in Cold Environments) Workshop will offer an opportunity for participants to discuss the effectiveness of geomorphic processes under past and present-day climate conditions, by focusing on the complex interactions between the erosional, sediment transfer and depositional processes and the varying vegetation cover. The workshop will be held between **5 - 8 September, 2017** at the **Research Station of the Babeş-Bolyai University (UBB), located in Baru, Hunedoara County, Romania.**

A **one-day field trip** will be organized in **Parâng Mountains (Southern Carpathians)**, during which the participants will be presented the morphoclimatic context of the Carpathians alpine areas. Several study sites with past and present-day geomorphic process activity (rockfalls, rock avalanches, debris flows, snow-avalanches, periglacial activity etc.) and the associated landforms will be visited during the field-trip day.

Venue and preliminary program

Tuesday, September 05, 2017: Arrival of the participants

5 p.m. Opening of the registration desk

7 p.m. Welcome cocktail & icebreaker

Wednesday, September 06, 2017: Scientific meeting (talks and poster presentations)

8 a.m. Breakfast

9 a.m. Chair's welcome and opening remarks

9:30 a.m. First session with talks

11 a.m. Morning coffee break

11:30 a.m. Second session with talks

12:30 p.m. Lunch

14:00 p.m. Third session with talks

15:30 p.m. Afternoon coffee break

16:00 p.m. Poster presentation

17:00 p.m. SEDIBUD business meeting

19:00 p.m. Dinner

Thursday, September 07, 2017: One-day field trip

8 a.m. Breakfast

9 a.m. Departure for one-day field trip in the alpine area of Parâng Mountains: Cârja Peak (2405 m a.s.l.), Mija glacial valley and lake (**Fig. 2**); estimated time for the field trip: 6 - 7h

18 p.m. Dinner at the restaurant in Petroșani city (after the field-trip)

Friday, September 08, 2017: Half-day scientific meeting with talks

8 a.m. Breakfast

9 a.m. Chair`s summary and closing comments

Departure of the participants

Registration information

Participants wishing to attend the workshop are invited to submit electronically an abstract as a Word attachment to:

olimpiu.pop@ubbcluj.ro

Please provide within the Word file the following information:

- presentation title
- authors' name(s) and institutional affiliation(s),
- text abstract (one or two pages of text without illustrations)
- preferred presentation type (talk or poster presentation)
- presenting author's name.

Registration and abstract submission deadline is July 30, 2017. For organizing reasons, we need to know the exact number of participants and to receive the submitted abstracts **by July 30**. Only the name of participants with their abstracts received until this date will be included within the workshop proceedings. Therefore, we kindly ask the participants to respect the registration and abstract submission deadline.

Total costs

Accommodation (shared rooms) at the UBB Research Station in Baru will be free of charge for all participants at the workshop. There will be no workshop fee. The participants will be charged only for the costs of their meals at the Research Station (welcome cocktail, breakfasts, refreshments for coffee breaks, lunch, dinner, lunch box for the field trip day). The

estimated costs for all meals at the Research Station is **50 Euros/participant** and shall be paid cash on the conference venue day directly to the registration desk open at the Research Station. The dinner in the evening after the field-trip day will be proposed in a nice restaurant and will be also at the participants' expense (**10-15 Euros**). During the field-trip day, an additional cost (**4 Euros/person**) will be necessary for cable transport (chairlift).

Organizing Committee

Achim A. Beylich, *Geological Survey of Norway (NGU), Trondheim, Norway*

Olimpiu Pop, *Babeş-Bolyai University, Faculty of Geography, Laboratory of Dendrochronology, Cluj-Napoca, Romania*

Dănuț Petrea, *Babeş-Bolyai University, Faculty of Geography, Laboratory of Dendrochronology, Cluj-Napoca, Romania*

Ionela-Georgiana Gavrilă, *Babeş-Bolyai University, Faculty of Geography, Laboratory of Dendrochronology, Cluj-Napoca, Romania*

Alexandru Onaca, *West University of Timișoara, Faculty of Chemistry, Biology and Geography, Department of Geography, Timișoara, Romania*

Flaviu Meseșan, *Babeş-Bolyai University, Faculty of Geography, Laboratory of Dendrochronology, Cluj-Napoca, Romania*

Travel Information

The UBB Research Station is located in Baru (Hunedoara County, Romania) and can be easily reached by car from all directions (**Fig. 1**). For those travelling by car in Romania, a road toll called *rovinieta* is required. It is available and can be obtained either directly at the entrance in Romania (in every gas station), or indirectly via online payment (<https://www.roviniete.ro/en>).

The participants who plan to travel to Romania by airplane can choose one of the nearest international airports from the Research Station:

- Sibiu (www.sibiuairport.ro), 163 km distance (2 h by car)
- Timisoara (<http://aerotim.ro/>), 195 km distance (2h30 by car)
- Cluj-Napoca (<http://airportcluj.ro/>), 217 km distance (3 h by car)

We will organize the transfer of the participants free of charge from/to the airports during the days of September 5 and 8, 2017.

We are looking forward to welcoming you in Baru, Romania!

Achim A. Beylich (Chair of the IAG/AIG SEDIBUD Working Group), achim.beylich@ngu.no

Olimpiu Pop (Chair of the Local Organizing Committee), olimpiu.pop@ubbcluj.ro

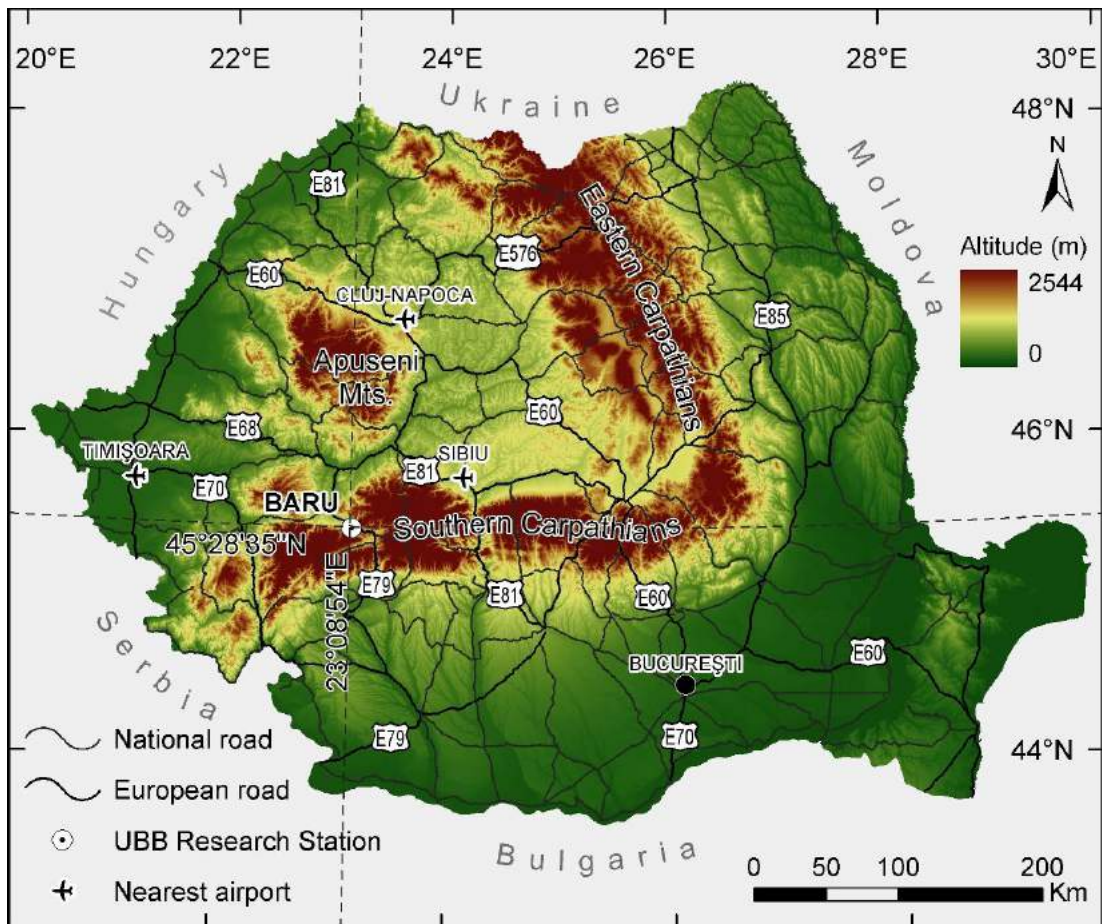


Fig. 1: Main access roads to the Research Station in Baru and nearest airports.

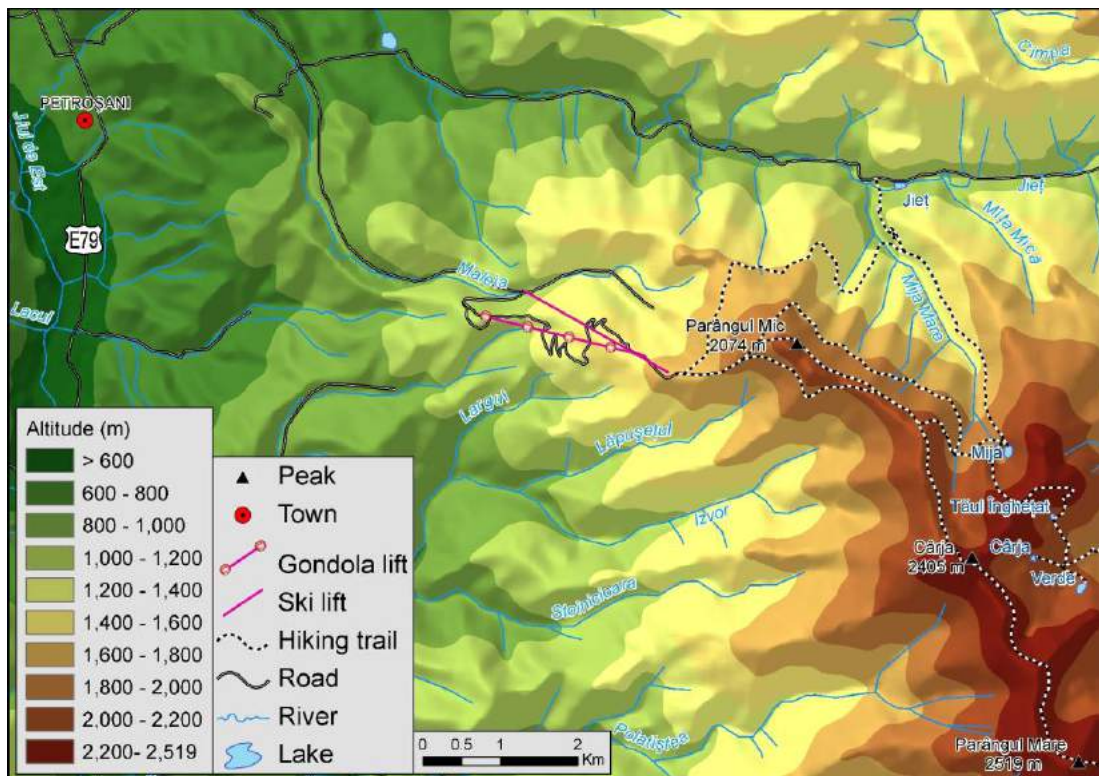


Fig. 2: Alpine areas in Parâng Mts., which will be visited during the field trip day.



W-oriented slopes below Cârja Peak (2405 m a.s.l.) with vegetation cover affected by debris flow and snow avalanche activity



Mija glacial valley, view on the NE-direction from Cârja Peak